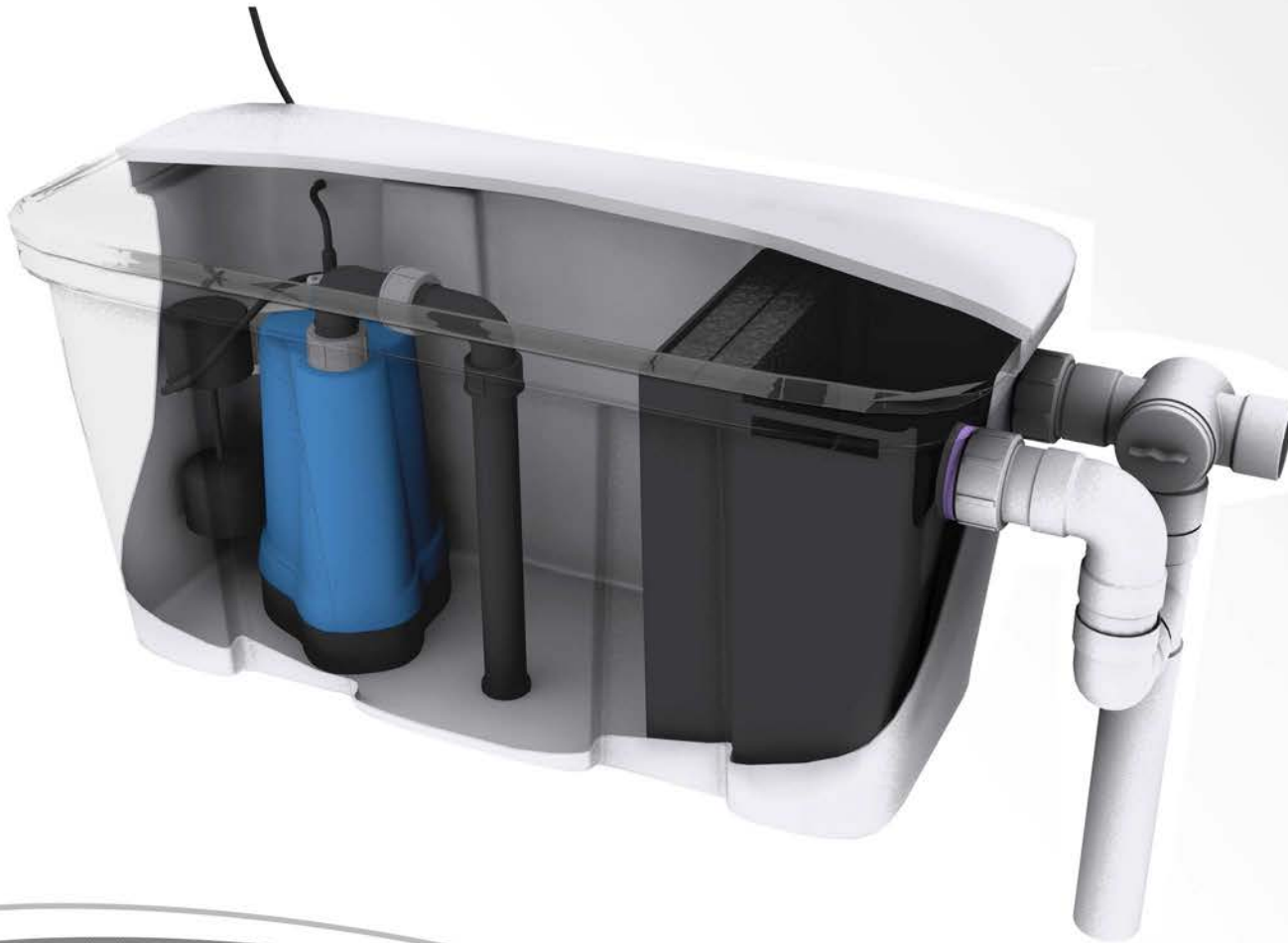


# **FLOW COMPACT PLUG & PLAY GREY WATER DIVERTER**

**“Save up to 200,000 litres per year”**



## **Features & Advantages:**

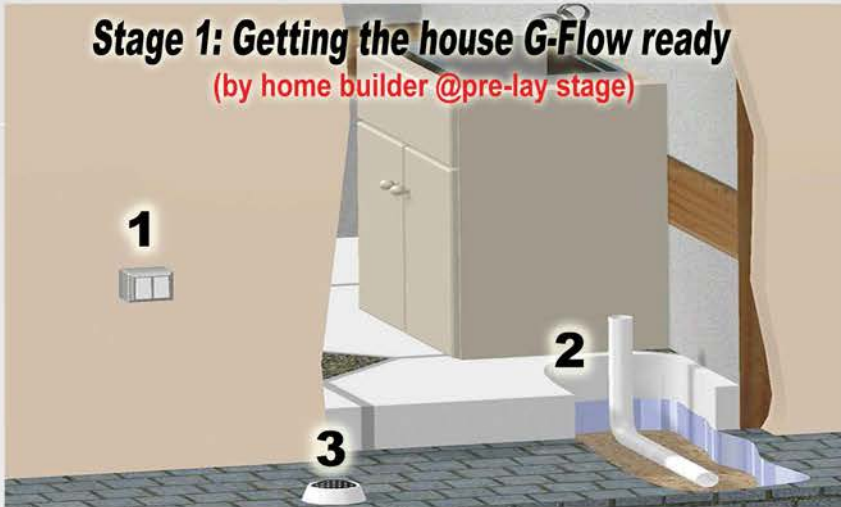
- Simple, Economical & Reliable design
- Easy to install compact system
- Robust thermal protected 240V pump
- Extra large filtration & sludge trap
- Low maintenance
- Wall mounting brackets
- Manual diversion to sewer (50mm)
- Watermark certified

## **Divert Grey Water from:**

- 1. Showers**
- 2. Washing Machine**
- 3. Basins**
- 4. Air Conditioner**

# EASY TWO STAGE INSTALL FOR NEW HOMES

## Stage 1: Getting the house G-Flow ready (by home builder @pre-lay stage)



1. Dedicated outdoor powerpoint outside the laundry
2. 50mm PVC sleeve from the washing machine to outside the laundry
3. Disconnected Gully (DG) outside the laundry

## Stage 2: Installing the G-Flow system & the irrigation components (prior to starting the paving work)



1. Installing the G-Flow diverter system
2. Connecting the inlet and overflow pipes
3. Installing the G-Flow irrigation system

# EASY RETROFIT TO EXISTING HOMES



1. Showers
2. Washing machines
3. Basins
4. Air conditioner
5. G-Flow system
6. Grey Water irrigation system